

## GENERAL INTRODUCTION

This information sheet is written for Masters of seagoing vessels, shipping lines, agents, publishers of nautical information and any other party that needs nautical information.

### LEGAL DISCLAIMER

Associated Icelandic Ports, here after named Faxaports, makes every effort to make and maintain the contents of this document as up-to-date, accessible, error-free and complete as possible, but the correctness and completeness of these contents cannot be guaranteed. Associated Icelandic Ports accepts no liability whatsoever for the occurrence and/or consequences of errors, faults or incompleteness or any other omission in connection with the information provided by this document. In case of any discrepancies or inconsistencies between this document and the applicable legislation, including the port bye-laws, the latter will prevail.

### CONTACT PORT

Faxaflóahafnir, Tryggvagötu 17, 101 Reykjavík, Iceland.

### CONTACT PERSON FOR PORT INFORMATION

Mr. Gísli Jóhann Hallsson, Harbour Master, mail: [gisli@faxaports.is](mailto:gisli@faxaports.is)

Mr. Gísli Gíslason, Port Director, mail: [gislig@faxaports.is](mailto:gislig@faxaports.is)

### THE PORT WEBSITE

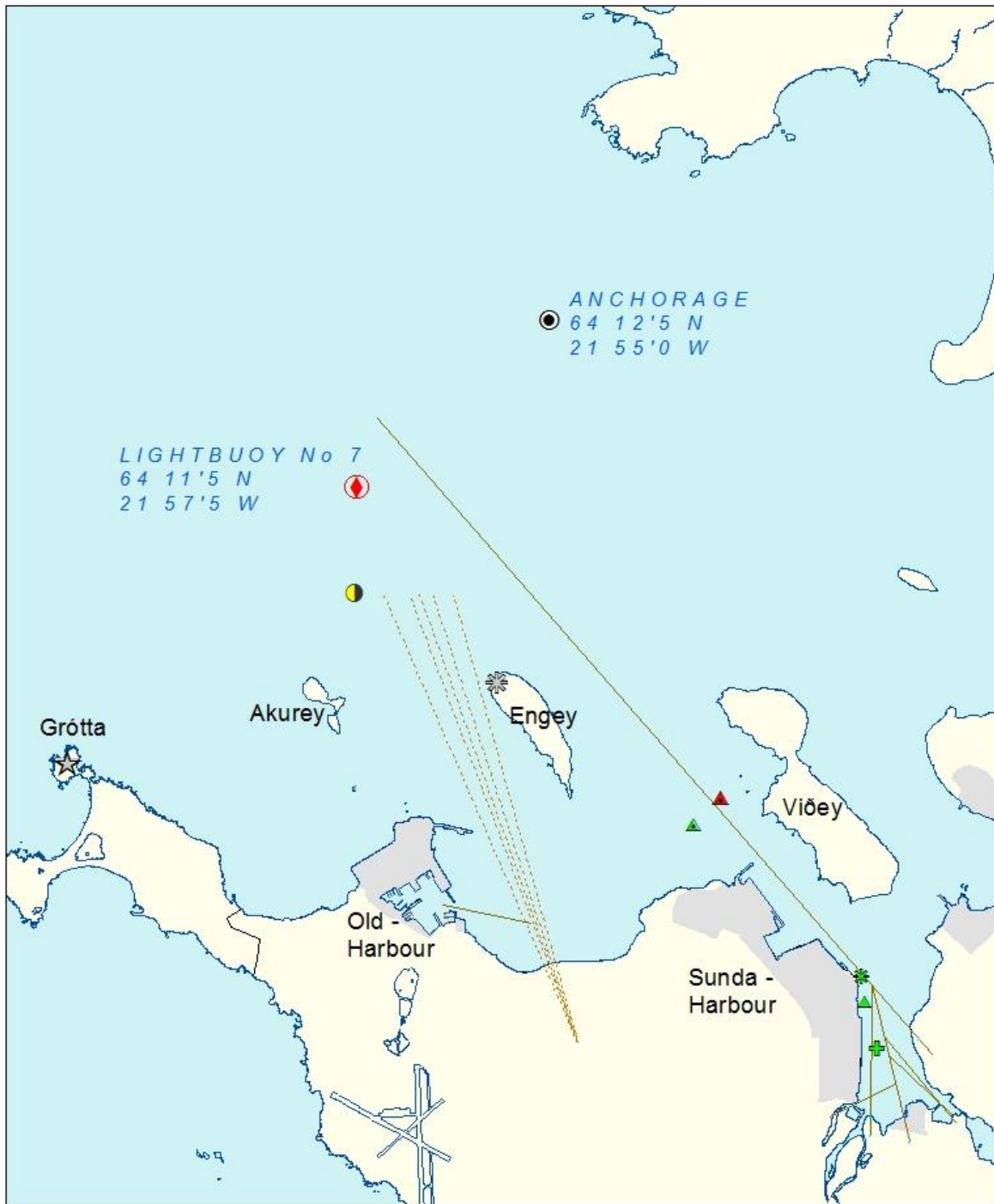
[www.faxaports.is](http://www.faxaports.is)

# PORT DESCRIPTION

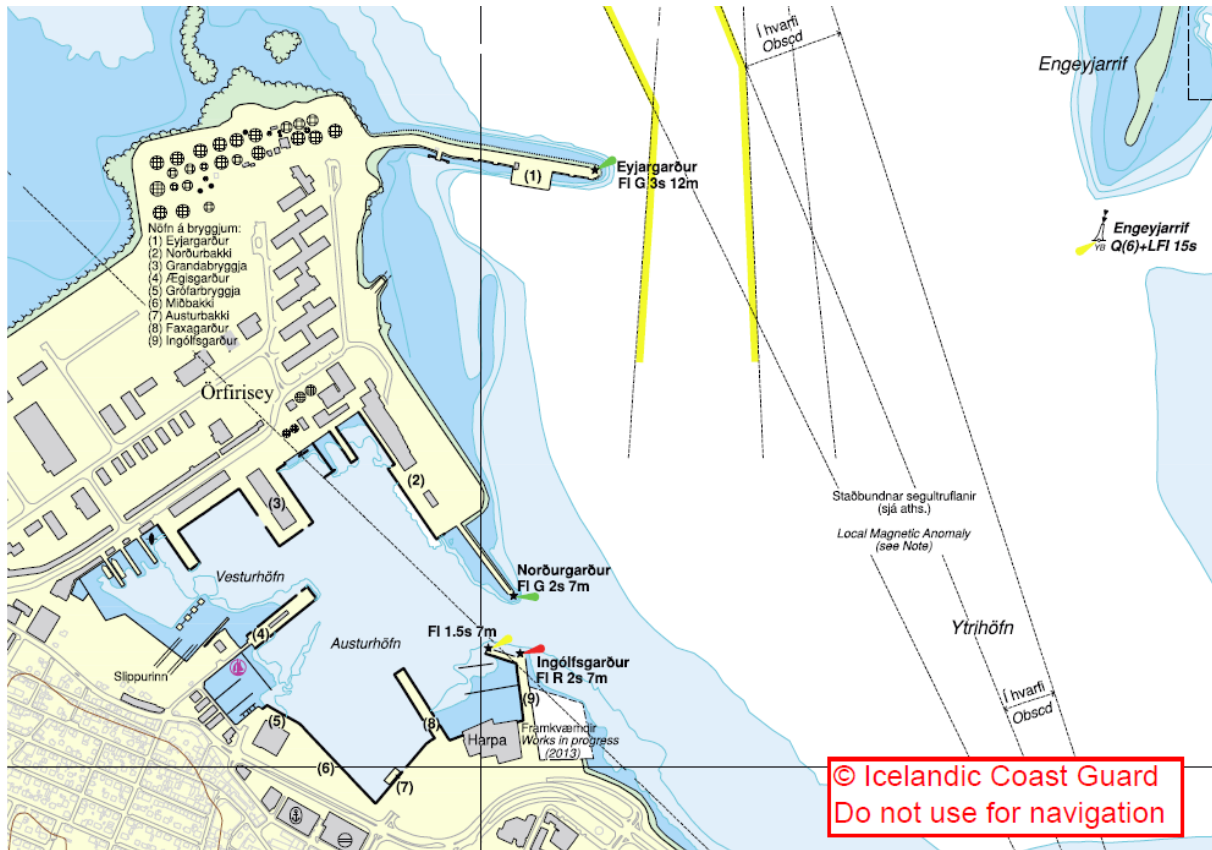
## General

Faxaports began its operations on January 1 2005. The company runs the harbours and ports of Reykjavík, Grundartangi, Akranes and Borgarnes. The Port of Reykjavík is divided into the Gamla höfn (Old harbour) and Sundahöfn.

- Gamla höfn (Old Harbour) is mainly used for landing of marine catches, ships repair and small passenger vessels.
- Sundahöfn is a multi-purpose cargo port and is also used for large passenger vessels
- Grundartangi is a industrial port with port facilities for adjacent ferro-silicon works, aluminium smelter.
- Akranes is a fishing harbour.



## REYKJAVÍK - Gamla höfn (OLD HARBOUR) - 64°09'0 N 021°56'0 W



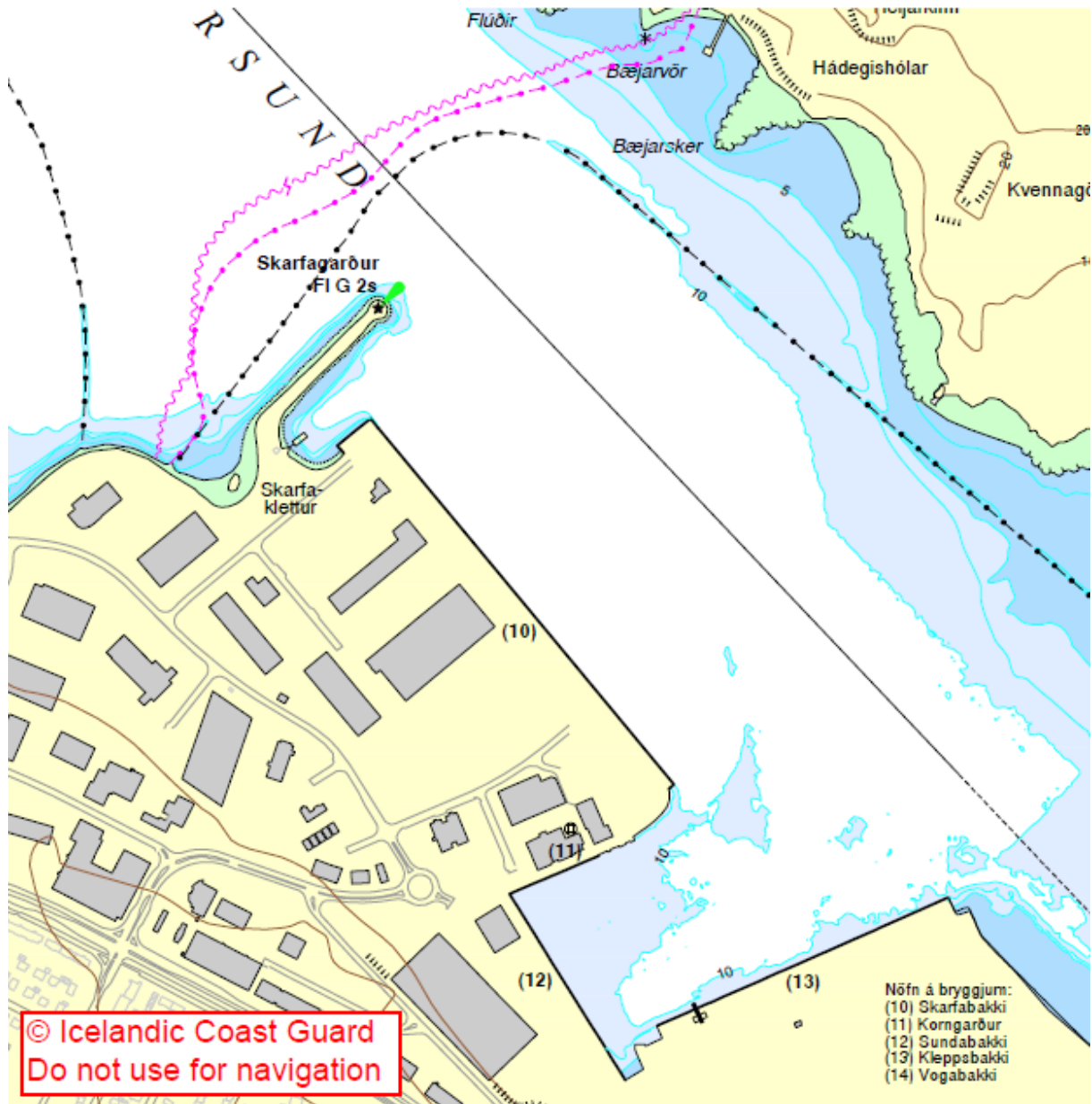
Gamla höfn (Old Harbour) is protected by two moles and the entrance width is 108 m. The harbour is divided into Vesturhöfn (West Harbour) and Austurhöfn (East Harbour). In the approach channel the water depth is more than 12.0 m. (MLWS) and depth at the entrance is 8.5m. and alongside 7.0-10.0 m. (MLWS). Prevailing winds from SE and E. Strong gale may be expected from N and NE. The harbour is easily accessible under severe weather conditions. Ships LOA limit is 170 meters.

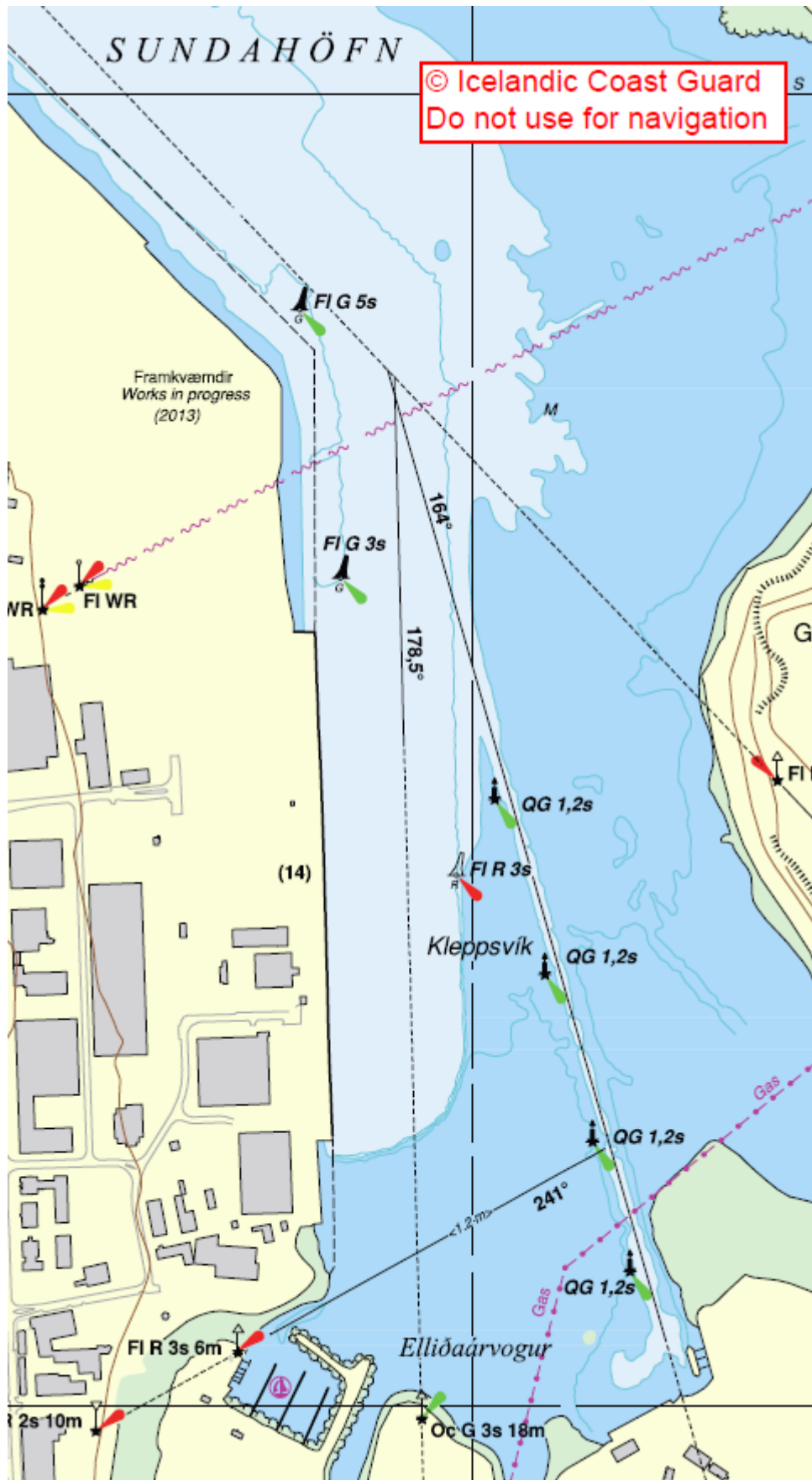
Berth	Length (m.)	Depth (m.)	Remarks
Midbakki	205	8.5	Cruise ( ISPS )
Ægisgardur	2 x 145	7.0	Trawlers/repairing
Grandabakki/Botarbryggja	140 /2x 70	8.5	Fishing vessels
Grandabryggja	2 x 125	8.5	Fishing vessels
Norðurgardur	160	8,5-10.0	Fishing vessels
Eyjargardur	72	13.0	Oil terminal ( ISPS )

All quays are protected by rubber fenders (diameter: 1,20 m).

## REYKJAVÍK - SUNDAHÖFN

64°09'1 N 021°51'0 W





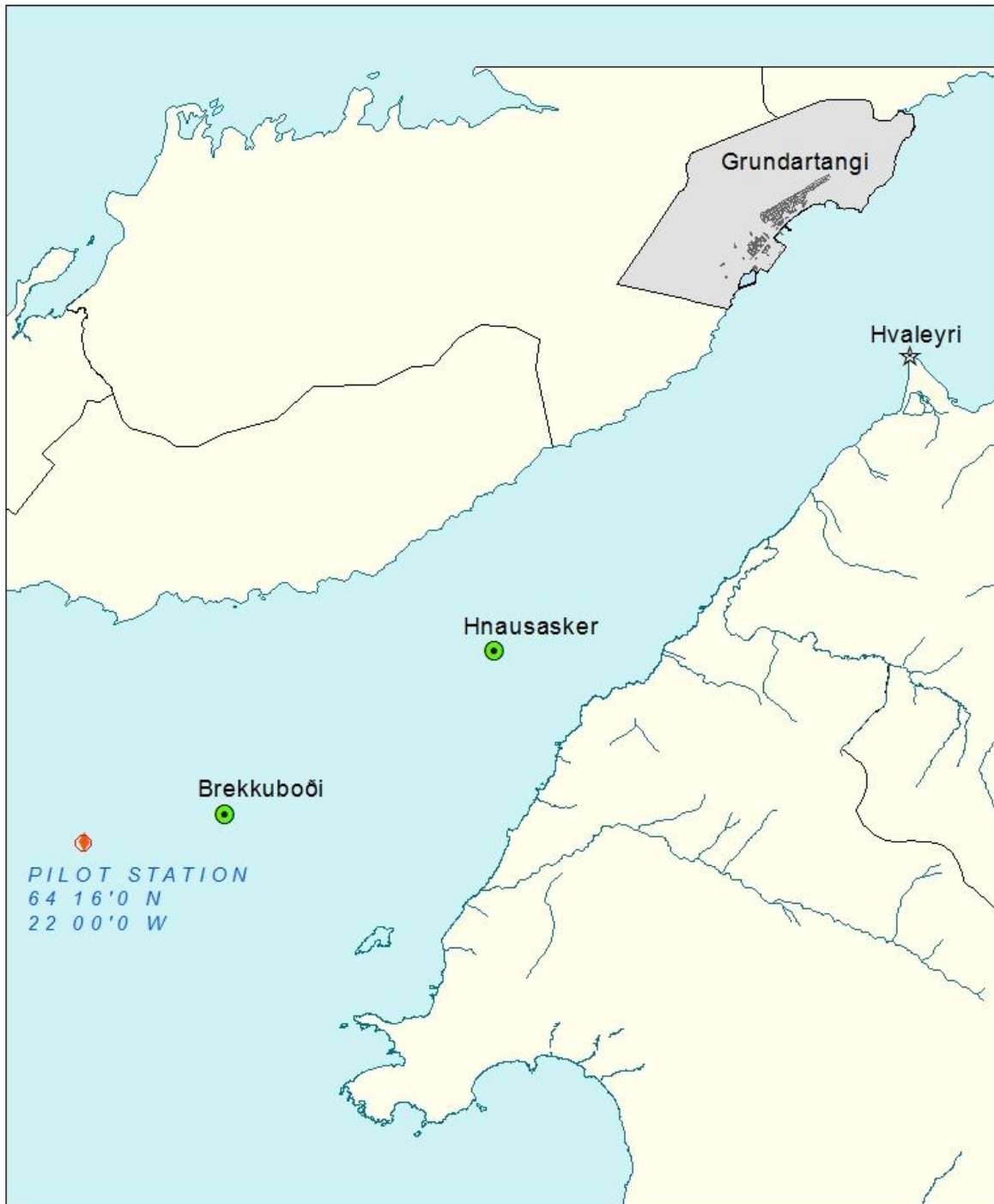
The harbour has restricted access from shore side. In the approach channel the water depth is more than 12.0 m. (MLWS). Prevailing winds from SE and E. Strong gale may be expected from N and NE.

The harbour is easily accessible under severe weather conditions.

Berth	Length (m.)	Depth (m.)	Remarks
Skarfabakki	650	12.0	Cruise, general cargo, bulk, trawlers ( ISPS )
Kleppsbakki	437	8.5/10.0	Containers ( ISPS )
Sundabakki	285	8.0	Containers ( ISPS )
Korngardur	184	8.0	Bulk / Cruise ( ISPS )
Vogabakki	720	8.0-9.0	Containers, general cargo, bulk, trawlers ( ISPS )
Artúnshöfði	102	4.5	Used for discharging cement, gravel and asphalt for industry ( ISPS ).

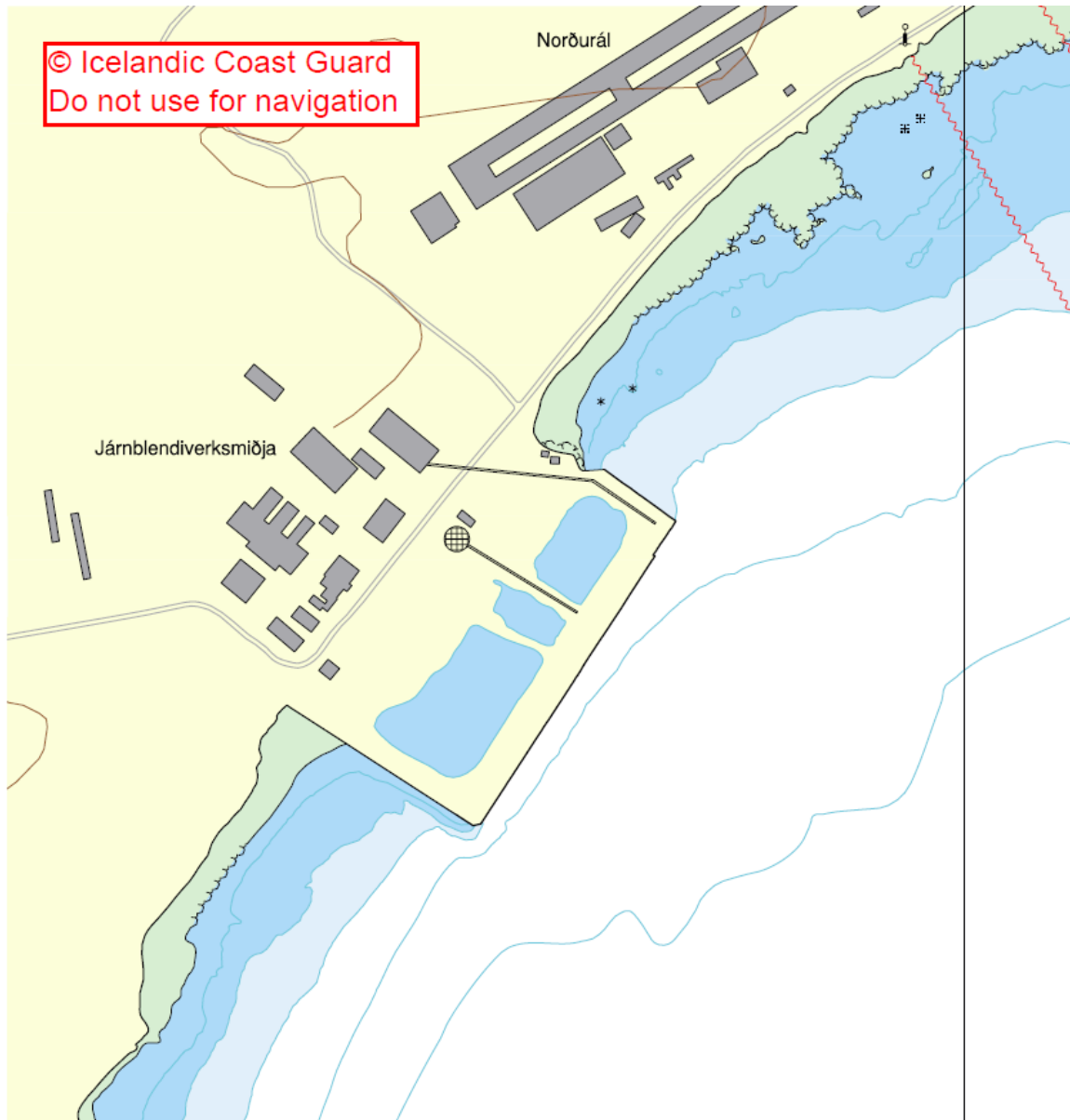
All quays are protected by rubber fenders (diameter: 1,20 m).







## GRUNDARTANGI - 64°21'4 N 021°46'6 W



The harbour has restricted access from shore side. In the approach channel the water depth is more than 27.0 m. (MLWS). Prevailing winds from E and NE. Strong gale may be expected from SW. The harbour is easily accessible under severe weather conditions.

Berth	Length (m.)	Depth (m.)	Remarks
Tangabakki	515	10.0/14.0	Bulk /containers ( ISPS ).
Austurkantur	120	7.5	Bulk ( ISPS )

All quays are protected by rubber fenders (diameter: 1,20 m).



**AKRANES - 64°18'8 N 022°04'8 W**



In the approach channel the water depth is more than 10.0 - 12.0 m. (MLWS). Prevailing winds from SE, SW and NE.

Berth	Length (m.)	Depth (m.)	Remarks
Adalhafnargarður	150 / 130	8.5 / 10.0	Fishing vessels ( ISPS )
Faxabryggja	76 / 70	6.5 – 7.0	Cement / bulk ( ISPS )
Batabryggja	103/ 62	3.5 / 6.0	Fishing vessels/repairing

All quays are protected by rubber fenders.

# PORT NAVIGATION

<b>Charts:</b>	BA Charts No. 2733, 2734 and 2735. Reykjavík – No. 362 Grundartangi – No. 365 / 366 Akranes – No. 364
<b>Restrictions:</b>	Draft in Gamla höfn (Old Harbour) is restricted at MLWS to 8.5 m., oil terminal 13.0 m, in Sundahöfn to 8.0 - 12.0 m., Grundartangi 12.0 m and Akranes 6.0 - 10.0 m. Max LOA in the Old harbour 170 meters. No other restrictions.
<b>Approaches:</b>	The harbour approach is unrestricted and ice-free all year round.
<b>Pilotage:</b>	Compulsory. Masters of ships calling more than eight times a year may apply for a Pilotage Exemption Certificate. All vessels carrying hazardous or dangerous cargo must use a Pilot. All vessels must give the Harbour Office at least 24 hours' notice of ETA and must contact the pilot station (VHF Channel 12) at least 3 hours in advance of ETA.
<b>Pilot Boarding position:</b>	Reykjavík 64°11'5 N 021°57'4 W (light buoy no. 7) Grundartangi 64°16'0 N 022°00'0 W Akranes 64°17'4 N 022°07'4 W (light buoy no. 11)
<b>Pilot Boat:</b>	Black hull with red and white deckhouse. International signals used if necessary.
<b>Anchorage:</b>	Good anchorage at Kollafjordur in 30-35 m., 2.0 n.m. north of Engey Lighthouse. Anchorage prohibited in vicinity of harbour entrance.
<b>Density:</b>	1,027 kg/m <sup>3</sup> (average).
<b>Pratique:</b>	Pratique obtained through Customs Authorities. In case of suspected disease notify port office or Agent in advance.
<b>VHF:</b>	The Harbour Office maintains a 24-hour listening watch on Channels 12 and 16. Working frequency is on Channel 12.

**Tugs:**

Available throughout 24 hours. Use of tugs is not compulsory, but vessels greater than 15.000 GRT. must have one tug on stand-by. All vessels carrying hazardous cargoes must use a tug for berthing. All harbour towage is provided by the Port Authority, which owns and operates four boats:

**Þjótur - 1 X350 h.p. / 6 tons Bollard Pull ahead**  
**Leynir - 2X475 h.p. / 14 tons Bollard Pull ahead**  
**Jötunn - 2X1.000 h.p./28 tons Bollard Pull ahead**  
**Magni - 2X1,360 h.p./40 tons Bollard Pull ahead**

**Tugs meet vessels in the roadstead.**

# Port Services

## Bulk Facilities

- Korngardur:** Quay accommodates bulk grain carriers. This quay is also used in summer for cruise ships.
- Tangabakki:** Quay accommodates bulk grain and aluminium carriers.

## Container Facilities

- Eimskip Terminal:** Eimskip Tel: +354 525 7000. Web: [www.eimskip.is](http://www.eimskip.is)
- Facilities:** Occupies the Kleppsbakki and Sundabakki quays, where there is a 300,000 sq.m. container terminal and a Ro-Ro berth.
- Cranes:** Paceco rail-mounted gantry with 35 tons capacity and 110 tons capacity Gottwald mobile crane.
- Storage:** 5.500 TEU and 400 reefer points.
- Samskip Terminal:** Samskip Tel: +354 458 0000. Web: [www.samskip.is](http://www.samskip.is)
- Facilities:** Occupies the Vogabakki quay, where there is a 220.00 sq.m. container terminal.
- Cranes:** Two 104 tones Liebherr LHM 400 mobile crane, outreach 12 containers.
- Storage:** 7.530 TEU and 352 reefer points.
- Passenger Facilities:** Skarfabakki and Midbakki.
- Tanker Facilities:** One terminal with two companies at Orfirisey - Eyjargardur (near Gamla Hofnin). Orfirisey has a storage capacity of 175,000 cu.m.
- Waste Disposal:** Waste disposal services are available 24 hours/day. Contact agent that will make arrangements for collection and disposal. Waste report to be sent to the harbour 24 hours before ETA by safeseanet or by email ([waste@faxaports.is](mailto:waste@faxaports.is)).

<b>Slops Disposal:</b>	See "Waste Disposal".
<b>Fresh Water:</b>	Fresh water available at all berths, at 20-30 t.p.h. and 100 t.p.h. at Skarfabakki.
<b>Fuel:</b>	Marine fuel is supplied by N 1 (Esso), Oliuverzlun Islands (Olis) and Skeljungur (Shell). Bunker barges supply fuel in all port areas.
<b>Electricity:</b>	Electricity available at most of the berths, 125 and 63 amperes.
<b>Services:</b>	Compass adjusting carried out by private firm as well as tank cleaning.
<b>Dry Dock:</b>	Slipways available up to 2,400 tones, length 85 m., beam 14.5 m.
<b>Repairs:</b>	All kinds of ship repair possible.
<b>Surveyors:</b>	Lloyd's Register, Norske Veritas, Germanischer Lloyd and Bureau Veritas.
<b>Gangway:</b>	Associated Icelandic Ports are able to rent out to clients an aluminium shore gangway. The gangway is 20 m long and 1.5 m wide. Net weight is 1700 kg. According to safety information 100 people are allowed at once on the gangway. The gangway is certified by Lloyd's Register
<b>Local Holidays:</b>	On Christmas Eve and New Year's Eve work stops at noon. Dock work continues on Bank Holidays and with labour union permission work may be carried out on Saturday for overtime payment and exceptionally at night until 22:00 hrs.
<b>Delays:</b>	Normally no delay is to be expected beyond that caused by normal Customs clearance.
<b>Embassy:</b>	USA, UK, Denmark, Finland, France, India, Japan, Canada, China, Norway, Russia, Sweden, Germany
<b>Consulates:</b>	Austria, Bangladesh, Belgium, Botswana, Brazil, UK, Bulgaria, Denmark, Estonia, El Salvador, Philippines, Finland, Greece, Holland, India, Ireland, Israel, Italy, Jordan, Canada, Croatia, Cyprus, Latvia, Lithuanian, Luxemburg, Malaysia, Malta, Mexico, Mongolia, Namibia, Nicaragua, Norway, Peru, Portugal, Poland, Romania, Serbia,



Seychelles, Chile, Slovakia, Slovenia, Spain, Sri Lanka, South Africa, South Korea, Switzerland, Thailand, Czech, Togo, Hungary, Ukraine, Uruguay, Germany.

**Telephones:** Telephone connection can be arranged at some berths in the Old Harbour and in Sundahöfn telephone connections will be at the quay.

**Nearest Airport:** Reykjavik Domestic Airport and Keflavik NAS International Airport.

**Customs:** 200 cigarettes or equivalent, one liter alcoholic beverage, 24 bottles beer or two liters of wine.

**Shore Leave:** Crew members are allowed to go ashore.

**Repatriation:** Can be arranged.

**Identification Cards:** Identification card must be carried.

**General:** Engines may not be running while ship is berthed without permission.

**Authority:** Associated Icelandic Ports (Reykjavik), Box 382, IS 121 Reykjavik, Iceland. Tel: +354 (525) 8900. Fax: +354 (525) 8990.

Email: [hofnin@faxaports.is](mailto:hofnin@faxaports.is)

Web: [www.faxaports.is](http://www.faxaports.is).

**Contacts:** Gisli Gislason, Port Director or Captain Gisli J. Hallsson Harbour Master.

**Immigration Office:** Crew List  
Passenger List.

**Customs Authority:** Maritime Declaration of Health  
Master's Report on vessel's arrival from abroad  
Master's Certificate with Manifests of all goods  
Master's Certificate with Manifests of goods to each port of discharge  
Parcel list of goods to be discharged  
Stores List.  
Crew / Passenger List

**Certificates:** All national, flagstate and Solas certificates  
<https://safeseanet.is/Web/theLogin.aspx>  
Icelandic coastguard

**Report:**

All vessels bounding to port in Iceland are required to report to Icelandic coast Guard at least 24 hours before. (<https://safeseanet.is/Web/theLogin.aspx>).

# Security and Safety

## Security information

**The ports operate within the ISPS code, security regulations. Security services are available all year round.**

### Contact numbers:

Reykjavík harbour offices: +354 525 8900,  
Web page: <http://faxafloahafnir.is/faxafloahafnir/en/>  
Harbour Pilot: +354 525 8930, 552-7686, 660-8930  
Fax number +354 525 8991  
VHF Radio Channel 12, emergency channel 16.

**Port facility security services:** +354 525 8930 [portsecurity@faxaports.is](mailto:portsecurity@faxaports.is)  
PSO (port security officer) +354 660 8920  
Emergency number for accidents, fire and medical is: 112

### Access control / surveillance .

The port facility is under surveillance and access to and from the port facility is controlled.  
To ensure that your stay is secure and traffic to and from the facility is smooth please note the following:

### Passengers:

Passengers leaving the ship must have their boarding passes with them to be able to come back to the ship.  
Passengers failing to display a valid pass will not be allowed entry into the harbour area.

### Crew.

Crew members leaving the ship must have their ships boarding passes with them at all times. Crew members failing to display valid credentials will not be allowed entry into the harbour area.

### Suppliers, supplies, visitors.

They must be announced in advance. Details about suppliers, supplies and visitors must be provided to the port facility security services. After being confirmed at point of entry, SSO will be notified of their arrival.  
All persons, vehicles and supplies entering the port facility will be security checked randomly.

### Ships at anchorage within the harbour area:

The surveillance of ships at anchorages is the responsibility of the ship itself. Additional surveillance from Port Security will be done if the security level is increased beyond level 1.

### DOS.

Normally there should be no need for signing DOS since the port facility is ISPS certified and normally also the ship. In case of a Declaration Of Security (DOS) request, please contact the PFSO in advance. The Associated Icelandic Ports have the facilities to provide for additional security arrangements that may be requested.

### Reykjavík port facility

Location/name	REK-	Port facility no.	Location	Security services local numbers.
Reykjavík -				
Midbakki		ISREY 0006	64°09.000'N 21°56.320W	+354 820 2432
Grofarbakki & At anchor		ISREY 0004	64°09.050'N 21°56.460W	+354 820 2432
Korngardur		ISREY 0005	64°09.060'N 21°51.570W	+354 820 2433
Skarfabakki		ISREY 0010	64°09.030'N 21°51.750W	+354 820 2435
Artunshofdi		ISREY 0001	64°07.980'N 21°49.720W	+354 660-8930
Sudurhluti Vogabakka við Kleppsvík		ISREY 0009	64°08.210'N 21°50.250W	+354 660-8930

Port facility security services: +354 525 8930, [portsecurity@faxaports.is](mailto:portsecurity@faxaports.is)

VHF Radio: Channel 12.

Additional information is available at : <http://faxafloahafnir.is/faxafloahafnir/en/>

### EIMSKIP, Port facility at Sundahöfn Reykjavík

Location/name	Port facility no.	Location	Security services local numbers.
EIMSKIP, Sundabakki, Kleppsbakki	ISREY 0002	64°08.960'N 21°51.380W	+354 525-7112, +354 825-7112

Port facility security services: +354 525-7112, 825-7112 [portsecurity@eimskip.is](mailto:portsecurity@eimskip.is)

PFSO (Port Facility Security officers) (+354) 525-7106, 825-7106 or (+354) 525-7101, 825-7101

### AKRANES, Port facility.

Location/name	Port facility no.	Location	Security services local numbers.
AKR-Akranes Adalhafnargardur	ISAKR-0001	022° 00' W, 64° 00' N	+354 660-8938
AKR-Akranes Batabryggja	ISAKR-0002	022° 00' W, 64° 00' N	+354 660-8938
AKR-Akranes Faxabryggja	ISAKR-0003	022° 00' W, 64° 00' N	+354 660-8938




PFSO (Port Facility Security officers) (+354) 660-8938 [akranes@faxaports.is](mailto:akranes@faxaports.is)

### Grundartangi, Port facility

Location/name	Port facility no.	Location	Security services local numbers.
GRT-Grundartangi	ISGRT-0001	64°21.394'N 21°46.585'W	(+354) 840-4080, (+354) 433-8752,

PFSO (Port Facility Security officers) [portsecurity@faxaports.is](mailto:portsecurity@faxaports.is) (+354) 660-8930

Fax: (+354) 525-8991

<p>Aðkomuleiðir viðbragðsaðila</p>  <p>Respose arrival routes</p>	<p>Flóttaleiðir</p>  <p>Escape routes</p>	<p>Söfnunarstaður</p>  <p>Meeting area</p>
--	--	---

**Flóttaleiðir, söfnunarstaðir og aðkomuleiðir viðbragðsaðila**

**Escape routes, meeting areas and response arrival routes**

**ELDUR**

- Hringið í **112**
- Tilkynnið um eldinn til nærstaddra
- Farið stöðstu flóttaleið út af svæðinu
- Ef flóttaleið er ekki fær, veljið þá veljið næstu flóttaleið
- Ekki fara aftur inn á svæðið fyrr en leyfi hefur verið gefið
- Fylgið fyrirmælum hafnargæsluaðila

**JARÐSKJÁLFTAR**

- Forðið ykkur út á opið svæði
- Forðið ykkur frá svæðum þar sem hlutir geta fallið.
- Krjúpa - Skýla - Halda
- Ekki hlaupaum í óðagoti
- Yfirgefið svæðið ef það er skemmt eftir skjálftann

**KYNNTU ÞÉR**

- Rýmingaráætlun hafnarsvæðis
- Flóttaleiðir
- Staðsetningu og notkun slökkvitækja og neyðarbúnaðar



**FIRE**

- Callemergency center **112**
- Notify others around
- Exit the premises using quickest route
- If route is not usable for exit; go to alternative route
- Follow security officers commands
- Do not re-enter the premises until authorised to do so

**EARTHQUAKE**




- Go towards open area
- Get away from areas where merchandise and other objects can fall on you
- **Kneel - Cover - Hold**
- Do not panic and run around
- Evacuate the area if it is damaged after the earthquake

**KNOW**

- The evacuation plan of the site
- Emergency exits and evacuation routes
- The locations and application of fire extinguishers and other emergency equipment





 Aðkomuleiðir viðbragðsaðila  
Response arrival routes
  Flóttaleiðir  
Escape routes
  Söfnunarstaður  
Meeting area

Flóttaleiðir, söfnunarstaðir og aðkomuleiðir viðbragðsaðila

Escape routes, meeting areas and response arrival routes

### ELDUR

- Hringið í **112**
- Tilkynnið um eldinn til nærstaddra
- Farið stýðstu flóttaleið út af svæðinu
- Ef flóttaleið er ekki fær, veljið þá veljið næstu flóttaleið
- Ekki fara aftur inn á svæðið fyrr en leyfi hefur verið gefið
- Fylgið fyrirmælum hafnargæsluaðila

### JARÐSKJÁLFTAR

- Forðið ykkur út á opið svæði
- Forðið ykkur frá svæðum þar sem hlutir geta fallið.
- Krjúpa - Skýla - Halda
- Ekki hlaupaum í óðagoti
- Yfirgefið svæðið ef það er skemmt eftir skjálftann

### KYNNTU ÞÉR

- Rýmingaráætlun hafnarsvæðis
- Flóttaleiðir
- Staðsetningu og notkun slökkvitækja og neyðarbúnaðar



### FIRE

- Call Emergency Center **112**
- Notify others around
- Exit the premises using quickest route
- If route is not usable for exit; go to alternative route
- Follow security officers commands
- Do not re-enter the premises until authorised to do so

### EARTHQUAKE


- Go towards open area
- Get away from areas where merchandise and other objects can fall on you
- Kneel - Cover - Hold
- Do not panic and run around
- Evacuate the area if it is damaged after the earthquake


### KNOW


- The evacuation plan of the site
- Emergency exits and evacuation routes
- The locations and application of fire extinguishers and other emergency equipment






  
Aðkomuleiðir viðbraðgsaðila  
Response arrival routes
 


  
Flóttaleiðir  
Escape routes
 


  
Söfnunarstaður  
Meeting area

**Flóttaleiðir, söfnunarstaðir og aðkomuleiðir viðbraðgsaðila**      **Escape routes, meeting areas and response arrival routes**

**ELDUR**

- Hringið í **112**
- Tilkynnið um eldinn til nærstaddra
- Farið stýðstu flóttaleið út af svæðinu
- Ef flóttaleið er ekki fær, veljið þá veljið næstu flóttaleið
- Ekki fara aftur inn á svæðið fyrr en leyfi hefur verið gefið
- Fylgið fyrirmælum hafnargæsluaðila

**JARÐSKJÁLFTAR**

- Forðið ykkur út á opið svæði
- Forðið ykkur frá svæðum þar sem hlutir geta fallið.
- Krjúpa - Skýla - Halda
- Ekki hlaupaum í óðagoti
- Yfirgefið svæðið ef það er skemmt eftir skjálftann

**KYNNTU ÞÉR**

- Rýmingaráætlun hafnarsvæðis
- Flóttaleiðir
- Staðsetningu og notkun slökkvitækja og neyðarbúnaðar



**FIRE**

- Callemergency center **112**
- Notify others around
- Exit the premises using quickest route
- If route is not usable for exit; go to alternative route
- Follow security officers commands
- Do not re-enter the premises until authorised to do so

**EARTHQUAKE**

- Go towards open area
- Get away from areas where merchandise and other objects can fall on you
- **Kneel - Cover - Hold**
- Do not panic and run around
- Evacuate the area if it is damaged after the earthquake

**KNOW**

- The evacuation plan of the site
- Emergency exits and evacuation routes
- The locations and application of fire extinguishers and other emergency equipment





## Safety

**Police/Ambul./Fire:** Tel: 112.

**Fire Precautions:** Ordinary precautions applied for handling of dangerous goods.

**Medical:** Medical attention available without notice. For hospital stay or surgical operation notice desirable, either through Agent or port office.

**Fire pump:** Tugboat Magni has a fire fighting pump, Caterpillar 3304B T/sterling – capacity 300 m<sup>3</sup>/hr. FI-FI monitors – 2 x 150 m<sup>3</sup>/hr.